

# “I AM CHALLENGING ALL OUR ALUMNI!”

Seymour Schulich, OC



Seymour Schulich and his daughter Judy visiting the site of the future Graduate Study and Research Building.

## Schulich School of Business \$5 Million Alumni Challenge

Double the impact of your donation to help construct the School's new 67,000 square-foot Graduate Study and Research Building, designed by award-winning architectural firm Baird Sampson Neuert and scheduled to open in early 2018.

There's never been a better time to invest in the future of our School. Between now and June 30, 2017, every dollar donated by alumni toward the new Graduate Study and Research Building **will be matched dollar-for-dollar by the Schulich Foundation up to a total of \$5 million.**

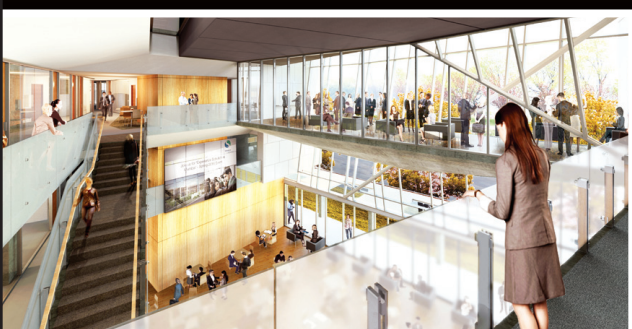
### ARE YOU UP FOR THE CHALLENGE?

Be a part of the Schulich \$5 Million Alumni Challenge. Contact the Alumni Office at (416) 650-8050 or visit:

[schulichleadingchange.ca](http://schulichleadingchange.ca)



Currently under construction and opening in early 2018



LEADING CHANGE

Schulich is Leading Change through campus expansion, research, innovative thinking, student success and alumni engagement.